



CAROLYN PALLIARDI
 dresses a whole bunch of
 lips in deep berry tones

Lifting the lid time to shine



BEAUTY FLASH

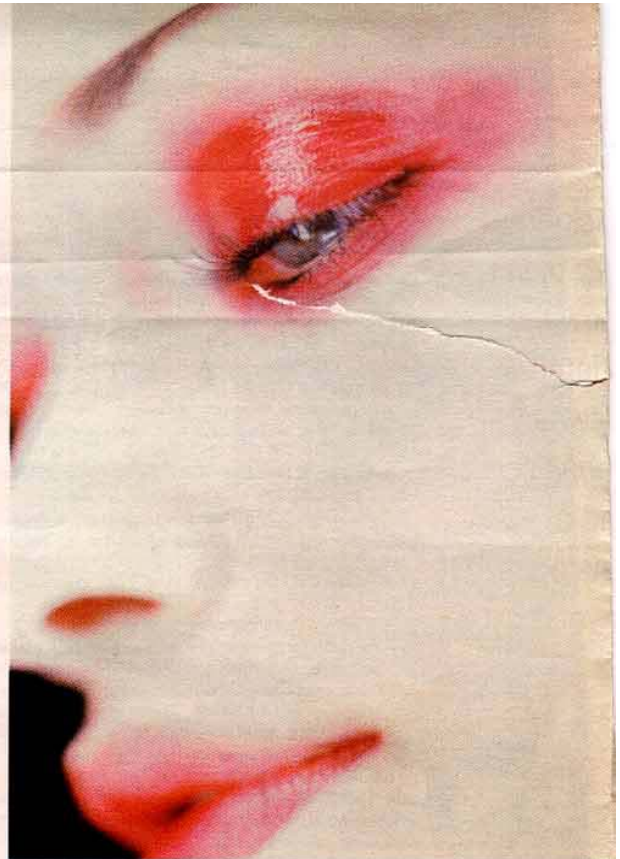
MPS Cosmedica makes some powerful promises. In just 14 days clear, firm and noticeably younger looking skin should be yours if you follow its regime. Why is this cream different from others? Apparently it goes further than conventional skin care, below the superficial level of the dermis in fact. This product is based on the MPS molecule, which occurs naturally in the skin cells of young people. It might sound pseudo scientific, but is definitely worth a try. MPS Day cream (\$89), MPS night cream (\$99) from David Jones and Myer/Grace Bros.

The emphasis on eyes this season is dark, smoky and – something not seen since the 1980s – glossy. Matte is passe and while you don't need to discard your soft, powdery shadows, you do need to add some shine to your eyes.

Some companies are producing "lipgloss" for lids. This may bring back memories of creases in the lids rather than shine on the eye, but most eyeshadows on the market allow you to create your own interpretation and promise crease-free wear.

The most outrageous, Chanel's Le Regard Laque, has revolutionised eye make-up. A compact of glitter red and black is intensified by adding an ultra gloss to create a vinyl effect that can be as simple or extreme as you dare.

If this sounds a bit over the top, ease into the look by changing your matte to a sheen with Chantecaille. On offer are eight high fashion colors in the Shine Eye Shade range – lightly textured shadow with an almost radiant glow of pearl.



Chan

Club Monaco has Eye Grease, a more dramatic way to create the edgy, unstructured look. The eight colors in the range help create a moist, smoky effect.

Bobbi Brown's pearly new shadows, called Shimmer Wash Eye, create a sheer shimmery finish.

While glossy eyes may not be everyone's idea of the perfect look, it's the versatile application of these shadows rather than the shine that will make them appealing.



tried&testec

Don't let the winter blues get you down.

Pucker up with deep berry tones on your lips and add a vibrant splash of color to the drab surrounds.



Australis - Leathers
 1191, \$6.95, 4g

A deep, rich color that is moist when applied. It is long lasting and does not bleed at the corners of the mouth. Great fashionable color, but you get what you pay for with the packaging. From selected pharmacies, discount stores and department stores.

7.5



Elizabeth Arden - Charm
 63 \$32, 4g

A lovely creamy lipstick which lasts through the day. The color is rich and doesn't bleed at all. The lipstick size means value for money. From department stores.

8.5



Mirenese 42
 \$16, 1g

This lipstick comes in great packaging – very unusual and surprisingly light. The color is excellent and wears very well. The thinner shape makes it easier to apply than traditional lipsticks. This tester will definitely buy it in the future. Inquiries: 1800 666 880.

8



Versace Lips V2065
 \$38, 3.8g

This is a beautiful lipstick. The color is a lovely shade and stays on during the day with little or no touch-up needed. Comes in a very smart container and is a pleasure to use. From Versace stores and Myer/Grace Bros.

8.5



Aveda - Mauve Mantra
 \$30, 3.4g

This lipstick is a really nice color. It is creamy in texture with a "fresh" taste when applied. The lipstick doesn't bleed at all and comes in a compact container with a full-sized lippy. Only disappointment is that it needs to be reapplied regularly. From Aveda stores. Inquiries: 1300 300 054.

7.5